



"Products That Work"



The I-O 5435dp is a high speed print server that easily attaches a **Canon imageRUNNER™** to an **IBM AS/400 or Mainframe via an Ethernet LAN**. In addition to offering network connectivity and printing functionality, the 5435dp is customized to support Canon's value added **Finishing Features**.

High Speed Connectivity

The 5435dp connects the imageRUNNER™ to a 10/100 Mbps Ethernet LAN. Via IEEE 1284 centronics parallel, the 5435dp allows print speeds of 60+ pages per minute.

Full-function Finishing Support

Canon's finishing features are supported by the 5435dp when printing from an AS/400 or IBM Mainframe. As a result, finishing features such as duplexing, collating, stapling, or hole-punching, are no longer restricted to LAN printing.

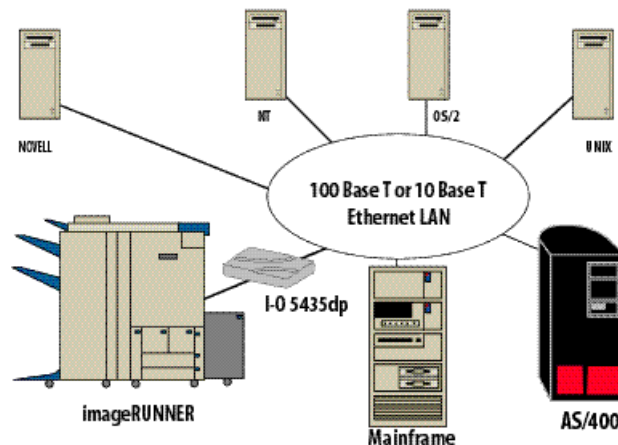
Reliable AS/400 & Mainframe Printing

Native print jobs are sent from the host and intercepted by the 5435dp. SCS and IPDS data is converted and sent to the imageRUNNER™ in PCL5e. This connection provides bi-directional communication between the imageRUNNER™ and the host for reliable AS/400 and mainframe printing.

Ease of Use

I-O's PrintControl™ utility software is furnished with every 5435dp. Mouse clicks and simple key-strokes, make configuration easy. The software offers all the options necessary for connectivity, including simple screens to select finishing features on a job by job basis.

I-O 5435dp



IBM Features

- **Supported Protocols for AS/400 Printing:**
 - TCP/IP (LPR/LPD, PPR/PPD, TN5250e)
 - SNA (5494, APPC)
 - AnyNet (SNA over TCP/IP)
- **Supported Protocols for Mainframe Printing:**
 - TCP/IP (PPR/PPD)
 - TN3270e
- **Supported IBM Printer Emulations:**

SCS	IPDS
- 3812-1	- 3812-2
- 4214	- 3816
- 5224/25/56	- 4028
- **Supported Printer Drivers for EBCDIC-ASCII Conversion:**
 - HP PCL5e

LAN Features

- **Supported Protocols for LAN Printing:**
 - TCP/IP (LPD/LPR)
 - IPX/SPX
- **Supported LAN Hosts:**
 - Novell
 - Windows 95/98/NT/2000/ME
 - Windows for Workgroups
 - OS/2 Warp, OS/2
 - UNIX
- **Supported Ethernet Frames Types:**
 - IEEE 802.2, 802.3, Ethernet II, SNAP

Physical Features

- **Supported Ethernet Media:**
 - 10BaseT, 100BaseT (auto-sensing)
- **Printer Ports:**
 - 1 IEEE 1284 bi-directional Centronics parallel port
- **100-250V (IEC) Power Supply Included**
- **FLASH Memory**

Features

- AS/400 printing over Ethernet
- True IBM printer emulation
- Multi-host printing
- Powerful RISC processor
- I-O Customized Finishing Commands
- I-O PrintControl™ Utility Software

Benefits

- Allows AS/400 print jobs to be seamlessly printed over a LAN.
- Permits full-function AS/400 printing on the imageRUNNER™.
- Maximizes the use of the imageRUNNER™ by supporting printing from IBM AS/400 & Mainframe, Novell, Windows 95/98/NT/2000/ME, OS/2, and UNIX hosts.
- Takes advantage of the imageRUNNER's™ maximum print speed even when processing AS/400 jobs.
- Makes available Canon® finishing features for AS/400 print jobs. (duplexing, collating, stapling, folding, hole-punching, etc.)
- Installation in minutes. Software allows users to select finishing features for individual print jobs.

Contact your local dealer at:

I-O Corporation

1490 North 2200 West Suite 100 • Salt Lake City, Utah • U.S.A. 84116
Telephone: (801) 973-6767 • Fax: (801) 974-5683 • www.oem.iocorp.com

Canon U.S.A Inc.

One Canon Plaza • Lake Success, New York • U.S.A 11042
Telephone: (516) 488-6700 • Fax: (516) 328-5700 • www.cusa.canon.com

